

**Martínez Vanaclocha**

**cnc machining and manufacturing**

# Who we are

**MARTÍNEZ VANACLOCHA S.L.** is an auxiliary company dedicated to the machining and production of mechanical components.

Located in the industrial area of Carlet (Valencia), we have a well-organized workshop that is very suitable to our activity; along with the most advanced technical means and a very professional human team allowing us to offer the best conditions of quality, price and delivery time of our products.

Since its creation in 1995, we have collaborated with companies of different sectors, such as the automotive, naval, alimentary, fruit packaging, machinery construction, assembly lines, and in general with any company that might have needed custom-made mechanical pieces.

We are specialized in optimizing the processes so as to achieve a reduction in the manufacturing time and unitary cost, especially in the production of large batches and in high-precision machining.

We also have a wide experience in the fabrication of special unitary pieces, those that require a special holding system, set up of mechanical assemblies, production of prototypes and the designing of special machinery.



# Technical equipment

## Turning centers:

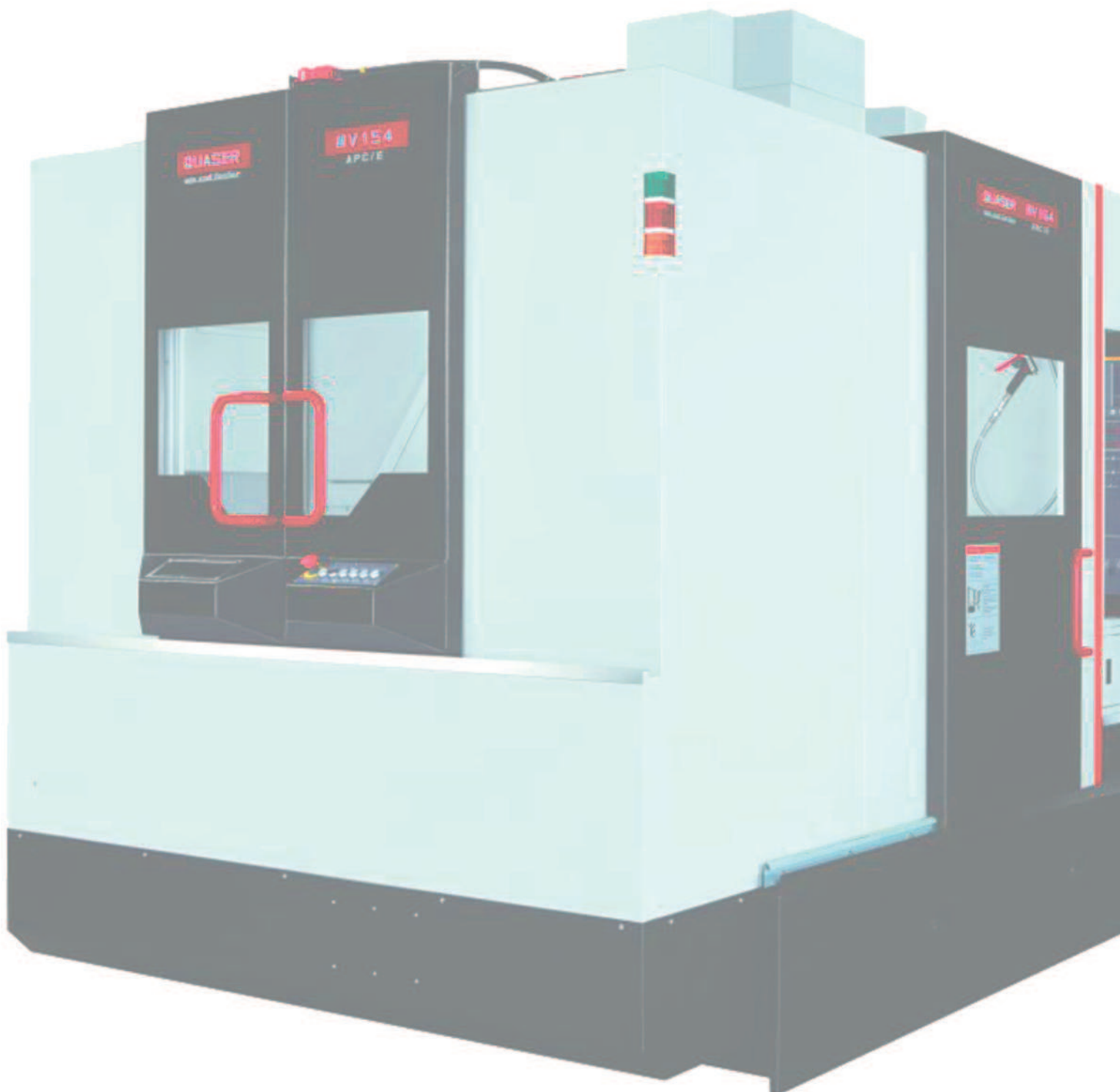
- 2 DAEWOO CNC lathes with FANUC control, motorized tools and automatic bar feeder.
- A CMZ TX66 CNC lathe, with spindle and sub-spindle with C-axis, double turret with motorized tools and Y-axis for milling operations, last-generation FANUC control and automatic bar feeder.
- A FANUC ArcMate robot providing the feed of pieces and allowing automation of the production.

## Milling centers

- 2 CNC milling centers with internal cooling and capacity to machine pieces up to 1.000x500x400mm.
- A QUASER CNC milling center with two interchangeable working tables and last-generation FANUC control.
- A FANUC RoboDrill high-velocity CNC drilling and threading center with Random-type tool change.

In **MARTÍNEZ VANACLOCHA S.L.** we also count on a wide range of conventional machinery, needed to perform auxiliary operations: 2 automatic CNC saws, manually operated lathes and milling machines, drilling and threading machinery, manual saws, welding equipment, mortiser, grinding machine, vibrator for elimination of burrs, press, shot penning machine, etc.

# Milled pieces



# Milled pieces



## Distributor block for pneumatic installations

Block manufactured in 6082 aluminum for the distribution and control of pressure in a pneumatic installation in an assembly line.

## Buffer system for automation

Main block and dowel stops, fabricated in steel and used for automation installations.

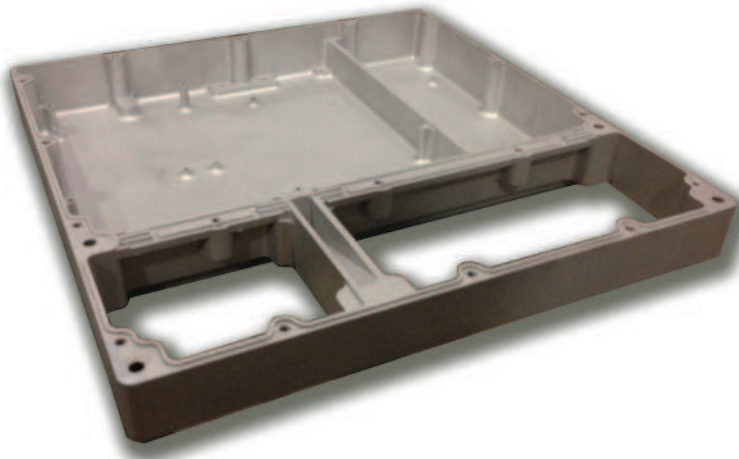


## Riveter head cover

Cover for the head of a riveter machine for the wood machinery sector. Manufactured in 1.1191 steel, grinded and nitrated.



# Milled pieces



## Lodging for electronic installations

Lodging box for the assembly of electronic systems and connections. Produced in aluminum with subsequent shot peening treatment.

## Refrigeration cover

Sealed cover for an electronic system lodging box, with blades for cooling the internal components.

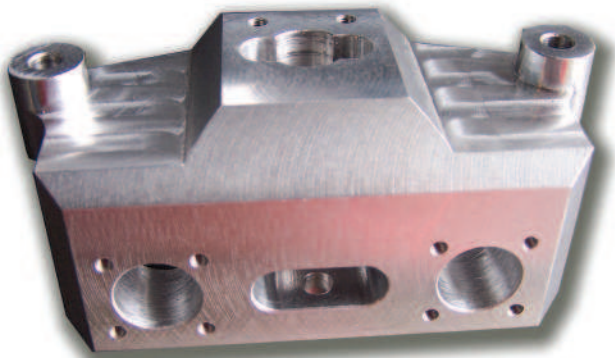


## Aluminum cover for connections.

Sealed cover for an electronic installation lodging box with an outlet for 5 connections. Machined from a solid block of aluminum.



# Milled pieces

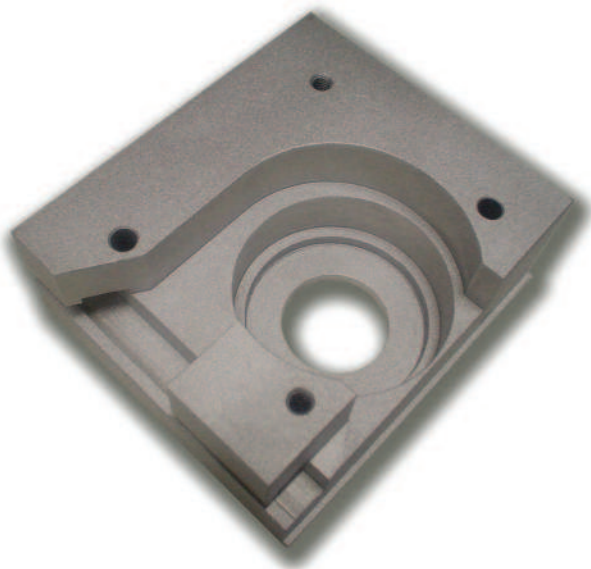
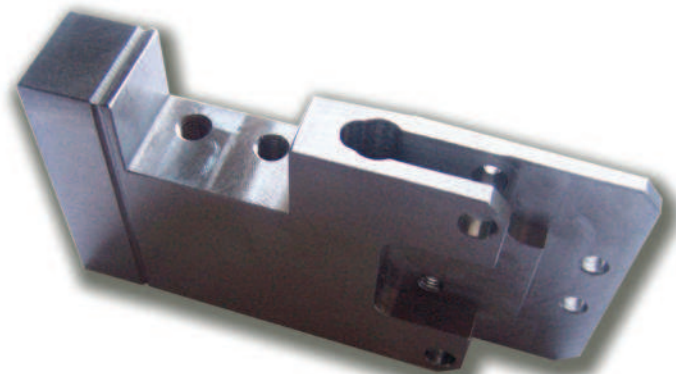


## **Automotive component**

Piece fabricated in duralumin for the automotive sector. High-precision machining.

## **Assembly of a prototype machine**

Union piece for the sub-chassis of a prototype machine for packaging of industrial liquids. Machined in steel and hard-tempered.



## **Transmission system box**

Lodging box for gears and track path for the belt of a bar feeder machine used in machining processes.

# Milled pieces

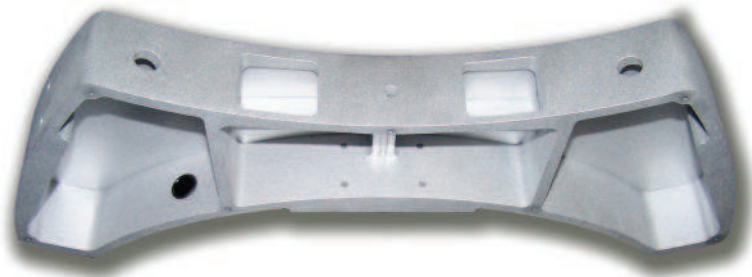


## Piece for the naval competition sector

Piece produced for a boat of one team participating in America's Cup. Manufactured in duralumin and followed by a shot peening treatment.

## Control box

A box made up of a main body and covers, where the electrical components of an elevator machine control box are lodged.



## Body for the control box

Different configuration of the previous control box. Both produced in aluminum and shot-peening treated.





# Milled pieces



## Support for tube joining

Support for holding tubes in perpendicular position that allows its posterior joining. Fabricated in high-hardness alloyed steel.

## Inclined support for machinery

Support with inclined surfaces for guiding pieces in a machine for the wood-manufactured products sector.

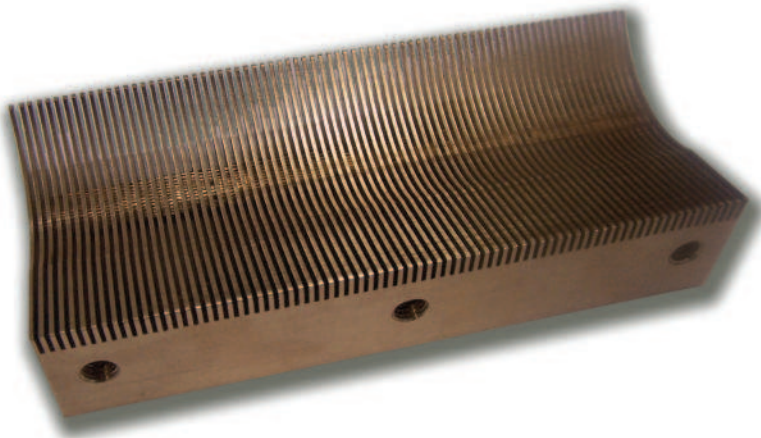


## Tool holder for PUMA240 lathe

Holder for mooring tools and cutting inserts for turning processes. Tested and used in our own lathe of this model.



# Milled pieces

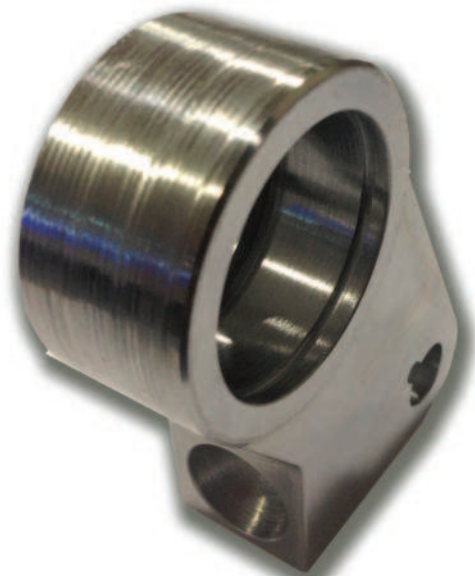


## Comb for blade guiding

Comb for guiding steel blades in a peeler machine for the fruit processing sector. Manufactured in bronze to reduce the friction with the blades.

## Riveter jig

Jig that applies rivets with a bearing seat for a riveter machine. Produced in high-hardness steel.



## Sliding plate

Supporting plate for the slippage of mobile parts in a carton-cutting machine. Made in high carbon content steel and with anti-wearing treatment.

# Milled pieces

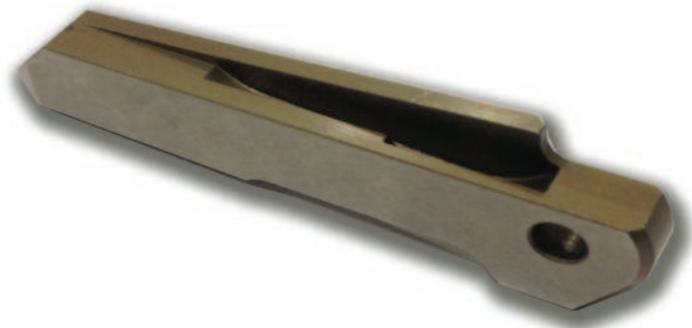


## Support for an ignition system

Support piece for the stator of an ignition system. Used to regulate the ignition in a competition motorbike.

## Adjusting piece for a laser

Adjusting component for a laser-cutting machine. Machined in 1.2379 steel with high precision; hard-tempered and grinded.

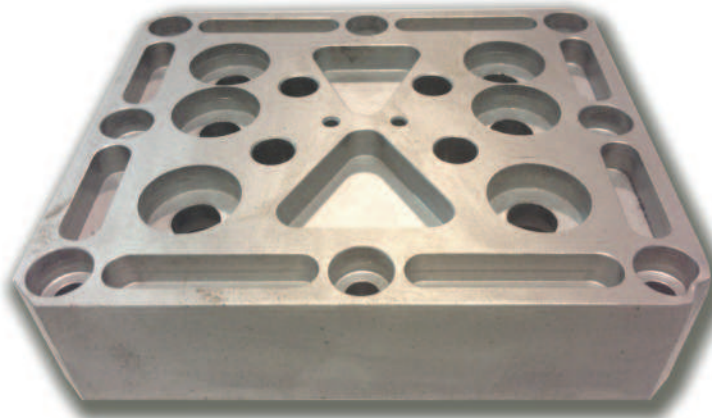


## Riveter block

Block of the chassis ensemble of a riveter machine for the wood sector.



# Milled pieces

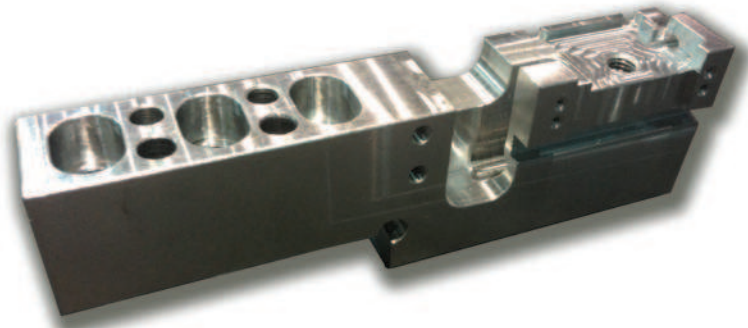


## **Gear lodging box**

Component for the simultaneous drilling of 6 holes. Lodges several gears to transmit the power to 6 tools so as to achieve a reduction in the operating time.

## **De-burring machinery component**

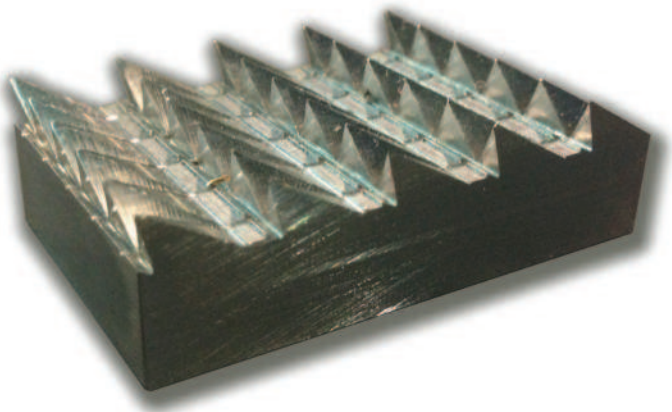
Seating piece for the mobile trolley of a de-burring machine. Machined from a solid block of aluminum.



## **Gas distributor component**

A piece for the gas distribution system of glass-ceramic hob. High demand of precision and quality. Produced in 6-serie aluminum with following shot-peening.

# Milled pieces



## Mooring nail

Mooring nail with a pyramidal geometry and inclined for holding wood boxes in automated systems in this sector.

## High-precision gearwheel

Aluminum gearwheel of high quality. Cut with water with subsequent machining to ensure high precision. Auxiliary piece for the fabrication of medical equipment.



## Nitrated wedge

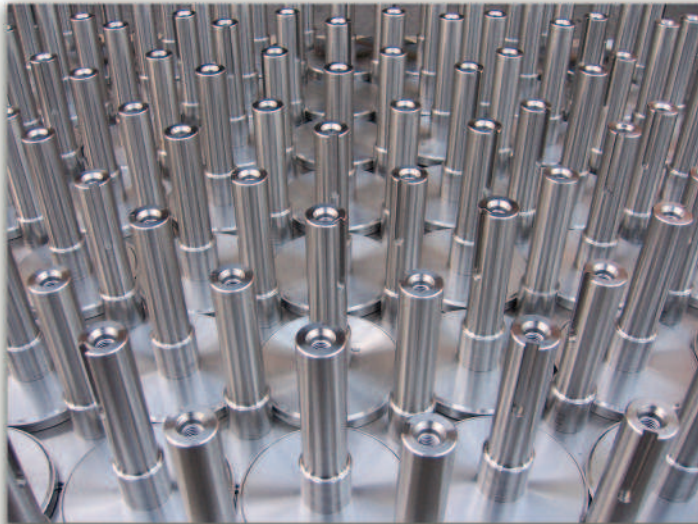
Wedge with a slight inclination used in auxiliary machinery. Machined in steel followed by nitrate treatment.



# Turned pieces



# Turned pieces



## Production of axles for car washing

Machining and union of axles and disks in stainless steel, for its subsequent welding and new turning. Used in car-washing machinery.

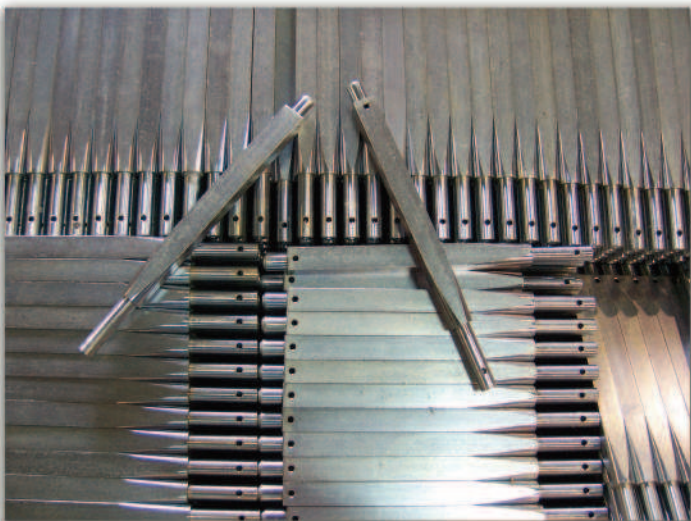
## Steel spacer bushings

Fabrication of spacer bushings for the installation of machinery in assembly lines. Manufactured in low carbon content steel.



## Squared and cylindrical shafts

Machining of cylindrical shafts from a squared geometry for turning over containers.





# Turned pieces



## Production of spacer sleeves

Large-scale production of spacer sleeves in steel, with central hole for a bolt. Posterior plating

## Machining of bronze pneumatic connections

Large fabrication of pneumatic connections for every kind of companies in this sector.



## Fabrication of brass lock-fittings

High volumes of lock-fittings of any type for hydraulics, according to drawing and specifications of the customer, made in brass, bronze or copper.



# Turned pieces



## Supports for fixation of glass

Tiltable support fabricated in stainless steel for the fixation of external large glass in buildings.

## High-precision aluminum tube

Aluminum tube with high-precision and low roughness internal machining for a protection set of a hydraulic piston.



## Support foot for heavy machinery

Base for the support and setting of heavy machinery of the bottling sector. Machined from a raw block of stainless steel.

# Turned pieces



## Coaxial connector

Connecting component to synchronize a machine. Large volumes produced from hexagonal 316L stainless steel bars.

## Bronze pneumatic connection

Connecting piece for a hydraulic system with coupling to an air hose. Produced in brass and in several versions.



## Eccentric sleeves

Several sleeves made with different eccentricities to be used in experimental tests of vibration reduction.



# Turned pieces



## Silencers for air blowers

Components for air blowers that produce a strangulation of the flow for an increase of speed and reduction of noise. Polish treatment after machining.

## Supporting sleeve for welding equipment

Fixation and centering sleeve for the spin of the wire coil in welding equipment. Manufactured in high-hardness aluminum.



## Sleeves for welding machinery

Small size sleeves for the thread pace system in welding machines. Produced in brass.

# Turned pieces



## Speaker bodies

Auxiliary small-size speaker support bodies, utilized in the electronic industry. Made in stainless steel and polished afterwards.

## Brass valves

Threaded valves with lodging for O-ring seals, produced in brass for air-compression pneumatic equipment



## Connection for hydraulic hose

A piece used for the conduction of hydraulic fluids, with connection to a pump and to a hose. Production of large series for the automotive sector, in steel and plated.

# Turned pieces



## Air-blowing silencer

Bigger-size model of the silencer for the exit of compressed air in pressurized blowing systems. Manufactured in steel with a posterior polishing treatment.

## Connecting piece for sensor automation

A piece with a conical thread connecting hydraulic circuits and lodging for the placement of several flow and pressure sensors.



## Threaded protection element

Cylindrical-conical piece with sharp end for the security and protection sectors. Can be easily installed in any threaded hole and fixed with a wrench.

# Turned pieces

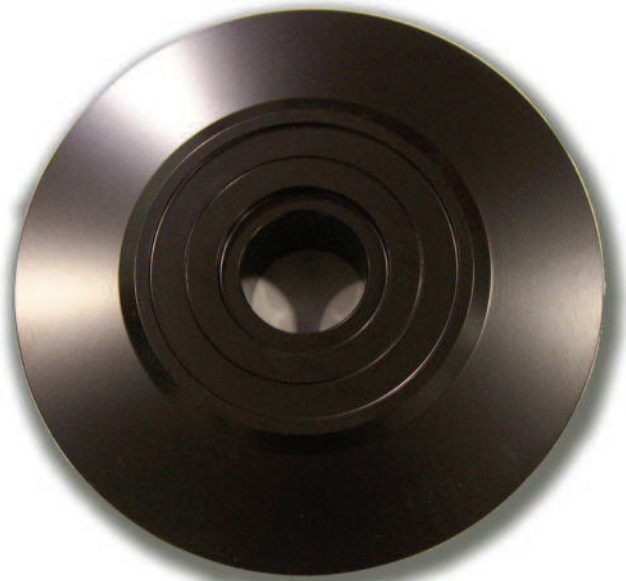


## **Knecap for the automotive sector**

Knecap with thread, machined in 420 maraging stainless steel. Annual production of over 20.000 units for the automotive sector.

## **Core speaker**

Support body for the main bass speaker of an audio system. High-precision machining with subsequent cementation treatment.

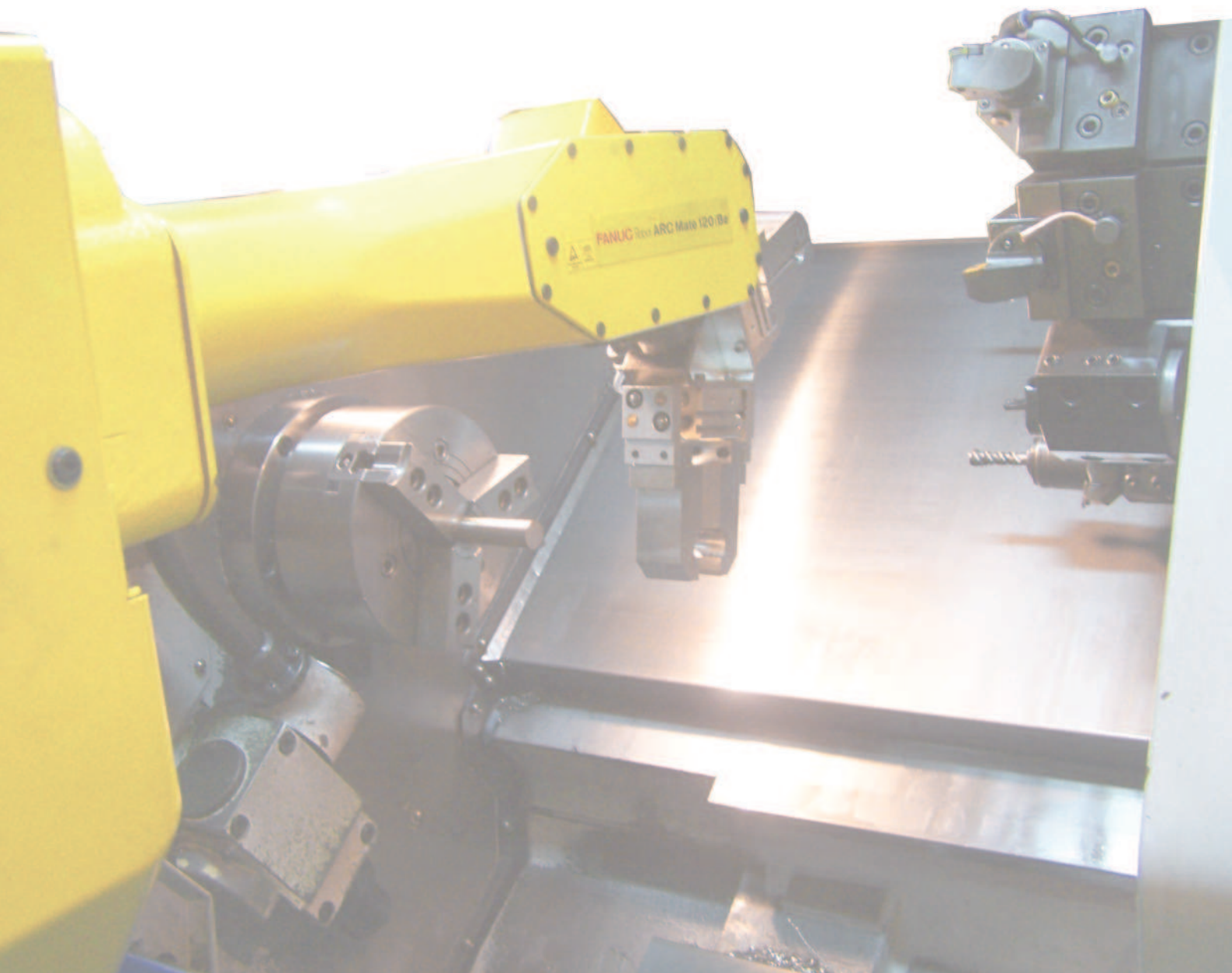


## **Power transmission shaft**

Steel shaft responsible of transmitting the power from an electric motor to the roller of a cleaning machine. With nitrating treatment and subsequent precision turning.



# Turned-Milled pieces





# Turned-Milled pieces



## Connector with special threads

Connection piece for anti-fire systems, with axial threads (male and female) according to customer's specifications, and standard radial threads of the metric and Whitworth systems.

## Bronze spacer ring

Spacer ring of complex geometry, with several axial and radial slots to allow its sliding along steel guides. Produced in bronze to avoid seizing up.



## Communicated pneumatic-hydraulic connector

Bronze connector with communicated drills for pneumatic-hydraulic combined systems and with a track for sensor adjusting.

# Turned-Milled pieces



## **Aluminum slotted hub**

6082 aluminum piece with longitudinal slots and several maximum-precision drills for positioning the piece in automobile cooling systems.

## **Tool-holder turret**

Aluminum prototype for validation tests of a tool-holder turret for a slight-turning machinery manufacturer.



## **Orthopedic kneecap gearing**

Prototype of a gear for designing validation tests of an orthopedic kneecap. Prototype realized in aluminum and potential posterior fabrication in special alloys.



# Turned-Milled pieces



## Orange squeeze roller

Thermoplastic roller with concave spaces for the introduction and squashing of oranges in juice squeezer machines.

## Custom gears

Big-size gears made-to-measure according to customer's specifications, for a manufacturer of the railway sector.



## Straight-toothed conical pinion

Conical pinion custom-fabricated according to sample in order to replace the worn original pinion of an elevator machine.



# Turned-Milled pieces



## Engine power transmission sprocket

Steel sprocket designed and manufactured for power transmission from an engine to a wheel through a chain.

## Stairway banister support

Support and union pieces of handrails and banisters of stairs, adjustable in inclination. Made in 304 stainless steel.



## Double mechanical cam

Steel piece with a double-cam geometry used in the construction of mechanical assemblies.

# Turned-Milled pieces



## Regulation tensors

Tensors for the regulation of anti-fire systems.

## Sleeve-cap ensemble

Combined piece that joins a spacer sleeve and a tightening nut, designed and produced for a specific hydraulic system.



## Support piece for counters and indicators

Support piece for installation and adjustments of pressure indicators and flow meters in high-precision pneumatic systems.

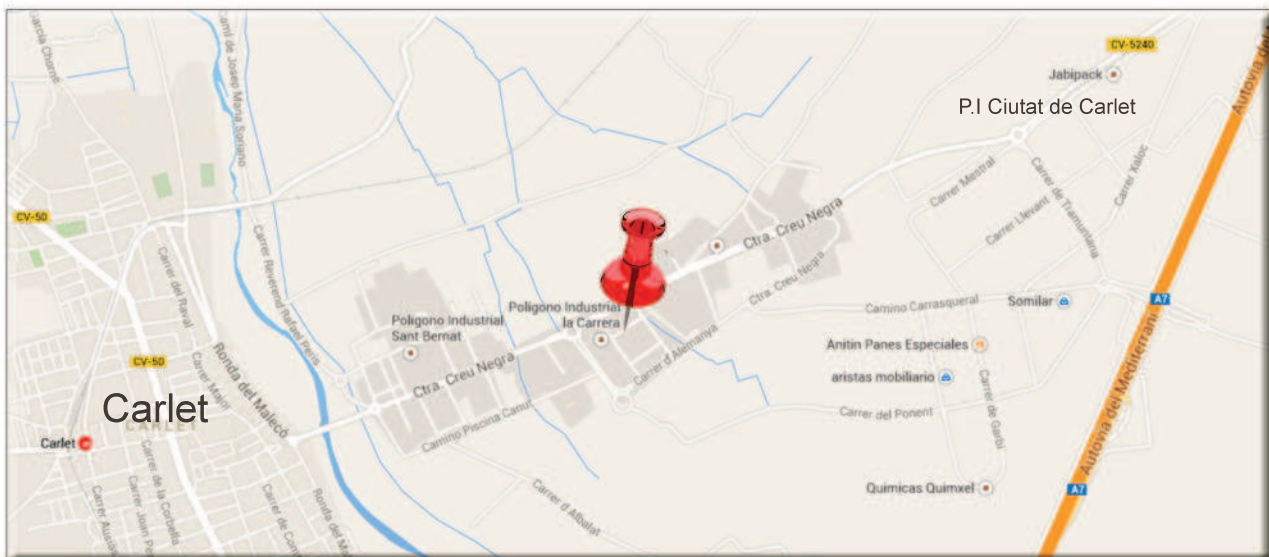


# Contact us

## CONTACT

**Martínez Vanaclocha, S.L.**  
 Irlanda street, 4 – ‘La carrera’ Industrial area  
 46240 – Carlet, Valencia, Spain  
 Phone: +34 962 530 153  
 e-mail: [mvanaclocha@vanaclocha.es](mailto:mvanaclocha@vanaclocha.es)

## LOCATION





 [facebook.com/martinez.vanaclocha](https://facebook.com/martinez.vanaclocha)

 [linkedin.com/in/martinezvanaclocha](https://linkedin.com/in/martinezvanaclocha)

